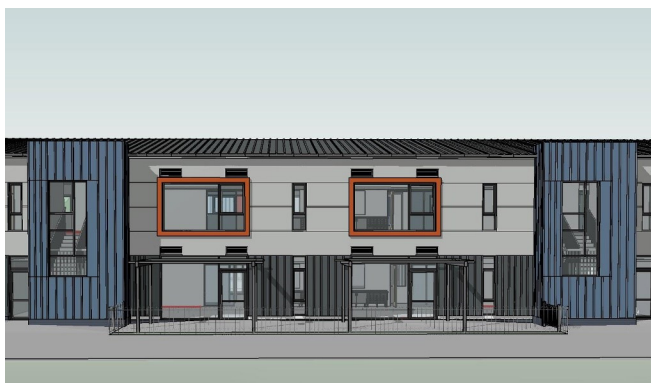




CASE STUDY: EDUCATION
YSGOL Y GARNEDD





Early Contractor Involvement (ECI)

A two-stage tender process with Early Contractor Involvement enabled Read Construction to be appointed early in the design process. The Contractor has taken part in the design development and construction planning stage of the project and has offered advice on buildability issues and cost efficiencies which helps to minimise risk moving forward. Early Contractor Involvement is widely accepted to be beneficial and supports improved collaboration, innovation and planning.

Sustainability Credentials

The new school is targeting a BREEAM Excellent rating as a Welsh Government funding requirement. The sustainability strategy minimises the energy demand and includes a number of renewable energy sources which will reduce the development's carbon emissions.

The school includes roof mounted Photovoltaic panels and a heat exchanging passive ventilation system to

minimise the heating and cooling loads of the building. The orientation, micro-climate and built form have all been carefully considered to allow the benefit of passive solar gain and plentiful natural light.

Environmentally responsible methods of construction and materials are used where possible. Materials are selected from local sources where possible to minimise transport energy use and help sustain the local economy.

The school will be constructed from a steel frame structure with composite insulated metal cladding panels to the majority of the walls and roof. Small sections of stone clad walls.

The BREEAM Excellent school received Planning Consent in December 2018 and is due to start on site in Spring 2019.

CASE STUDY: EDUCATION

YSGOL Y GARNEDD

Name of Building

Ysgol Y Garnedd

Planning Consent

Winter 2018

Project Cost

£7.8 million

Building Type

Education—Primary

Location

Bangor, Gwynedd

Client

Gwynedd Council

Contractor

Read Construction

Building Overview

Ysgol Y Garnedd is a new £7.8 million primary school in Bangor forming part of Gwynedd Council's 21st Century Schools Programme. The new school will accommodate children from the Penrhosgarnedd, Tal-y-bont and Llandygai catchment areas and is located on a site adjacent to the existing Ysgol Y Garnedd school building, which is currently severely oversubscribed. Once construction of the new building is completed, the existing school buildings will be demolished to make way for an additional car park and sports fields for the new school.

The new school has been designed as a modern, well-equipped facility providing fourteen classrooms, two ALN classrooms, a nursery, a Cylch Meithrin and a large hall, along with a number of other different teaching spaces, staff and administration areas. The form of the building has been designed to group together the classrooms for each Key Stage whilst creating a safe play environment at the heart of the school. A central courtyard creates a safe space to play for the younger years of the school whilst the older pupils have a larger space to the north, and both areas benefit from passive supervision.

Whilst being contemporary in design, the building has been designed to sit comfortably within its semi-rural landscape. Materials have been chosen through careful study of the locale and a consideration for buildability, and used to articulate the function of the building. Local stone forms some elements of the façade and boundary walls providing a grounding in terms of its geological context and an architectural similarity to the buildings of the area. Metal coated composite panels break up the mass of the building and articulate elements such as windows and separating floors.

