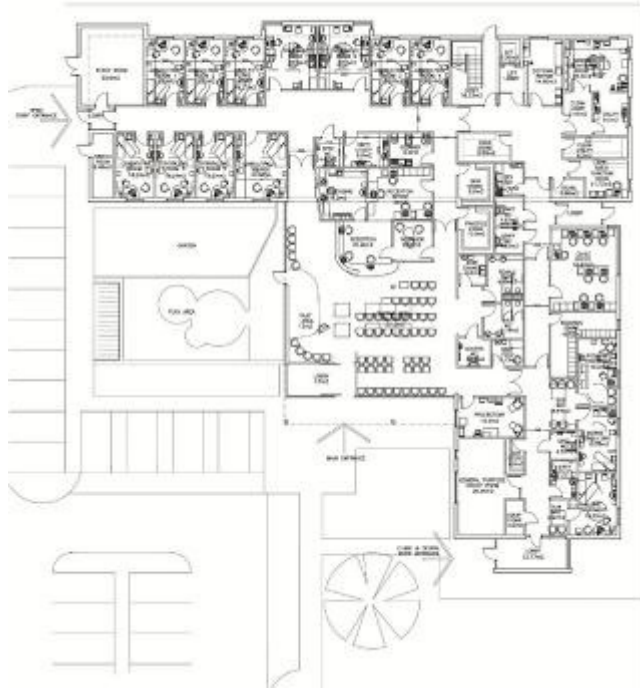


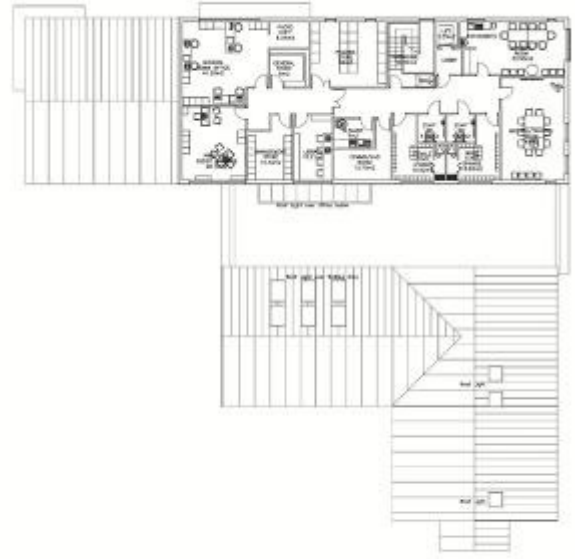


CASE STUDY: HEALTH

HOPE PRIMARY CARE RESOURCE CENTRE

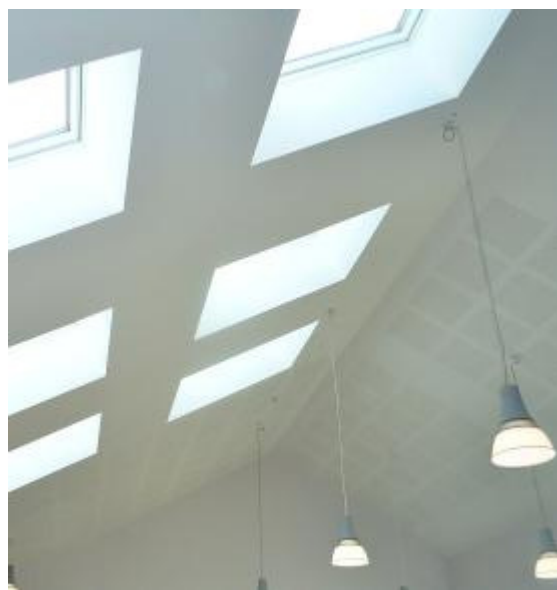


Ground Floor



First Floor





---

## Facilities

### Hope Family Medical Practice

- 9 no. Consulting Rooms and 2 no. treatment rooms to provide GP, clinical and nursing facilities.
- Dispensary to serve local community area.
- Administration facilities and office spaces

### Local Health Board

- Nurse Treatment and Consulting Rooms including Phlebotomy and Podiatry

### Shared Facilities

- Generous reception and waiting areas with associated child's play area and sensory garden
  - Staff Room, Changing Facilities and Meeting / Training Room
- 

## Sustainability Overview

The aim of the sustainability strategy is to minimise the energy demand and carbon emissions associated with the development, and therefore limit the effect on the environment. Designed to achieve a BREEM Very Good Standard, the building considers orientation, micro-climate and surrounding built form allowing the development to benefit from passive solar gain, natural light and wind direction.

Whilst the principle strategy concentrates on an enhanced building fabric, solar hot water panels are being considered and the roof also provides suitable locations for PV panels to be sited in the future.

The building is sited within the local community to promote the use of sustainable transport to and from the site, with cycle racks and new bus stops as part of the development to make the facilities more accessible to local people.

---

# CASE STUDY: HEALTH

## HOPE HEALTH CENTRE

---

**Name of Building**

Hope Primary Care Resource Centre

**Project Cost**

£2.7 million

**Building Type**

Health Centre

**Location**

Hope, Flintshire

**Client**

Castlemead Group & Betsi Cadwaladr  
University Health Board

**Main Contractor and Developer**

Castlemead Developments Ltd

**Building Overview**

The new Hope Health Centre provides much needed combined health services for two historic Welsh villages sitting side by side. The existing high street surgeries had occupied buildings of residential scale with limited scope for expansion, with cramped health facilities which were unsuited to modern accessibility requirements. The new health centre, as well as providing new accommodation for the existing Hope Family Medical Centre, provides consulting rooms and administration facilities for Betsi Cadwaladr University Health Board.

The new building is located off the main highway in Hope Village allowing convenient and sustainable access for residents from both Hope and the nearby village Caergwrle.

The health centre has been designed to be modern in appearance whilst reflecting the local vernacular in the use of form, scale and materials. Respecting its village location, the new building is predominantly single storey with a small two storey element at the rear. A key driver behind the design was to ensure that all rooms have good levels of natural daylight, with the cellular consulting and medical rooms all having views out over open fields to the north and east, located around a centralized full height waiting area with views out over a sensory garden.

A simple palette of high quality, well detailed and durable materials were proposed to complement the surrounding context. The chosen materials of through-coloured render with an engineering blue brick base, profiled vertical timber cladding, aluminum glazing and fibre cement roof slates create clean lines and a visually uncluttered building. Composition of building elements help to break down the massing of the building helping to create a welcoming environment of human scale.

