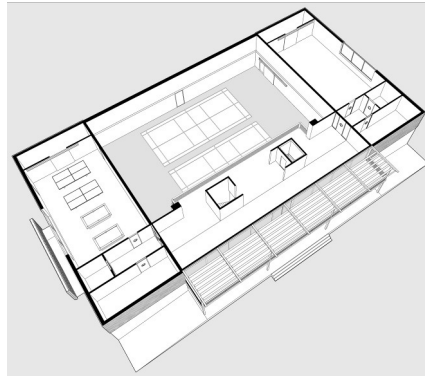
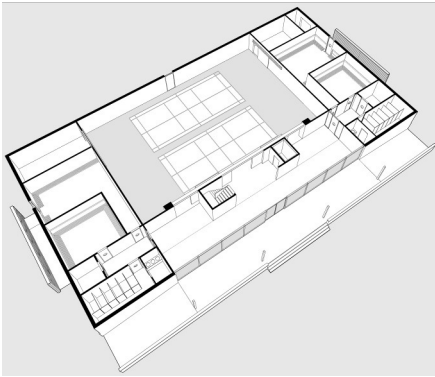




BROMBOROUGH POOL VILLAGE SPORTS PAVILION

for Riverside with Wirral Autistic Society



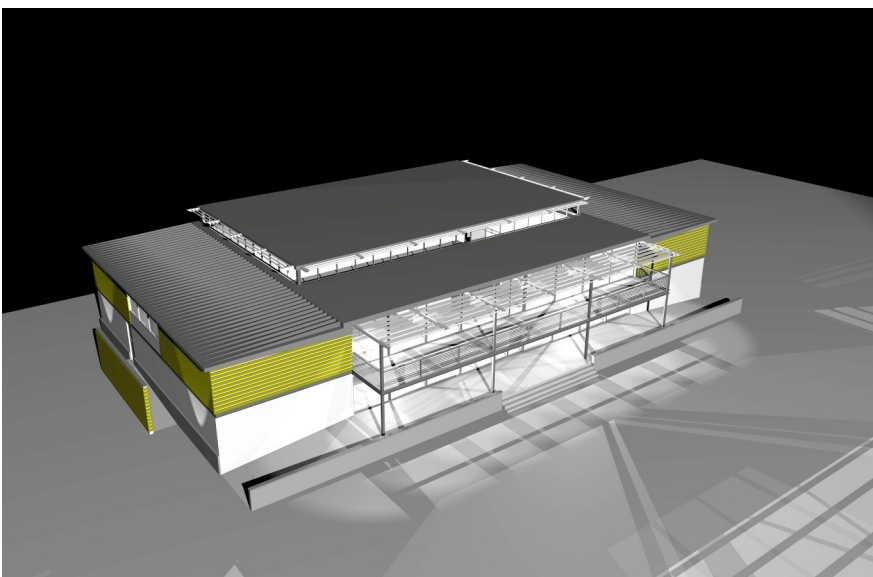
Bromborough Pool Village is a historic planned village, built in 1854 for the workers of Prices Patent Candle Factory. The philanthropic owners provided the village with bowling greens, tennis courts, a football field and cricket pitch. This green space provides a green buffer round the village and is part of the protected character of the village, which forms the Bromborough Pool Village Conservation Area.



To ensure continued use of the open space for the village community and visitors to the village Ainsley Gommon proposed a concept design for a new sports pavilion for Riverside with Wirral Autistic Society. It is proposed that the new sports pavilion will replace an inadequate and outdated pavilion currently located at the edge of the cricket pitch within the village.



The new pavilion will provide facilities for use by the community and visitors. Provision of fully inclusive facilities was a prime consideration as part of the design process, with a key focus to enable the whole community to use and enjoy the building.



The proposed pavilion building is contemporary in design and will be faced in materials that comfortably and sensitively sit within the landscaped setting of the village.

The aim of the proposals was to enable Riverside and Wirral Autistic Society to investigate different funding streams to provide this potential community asset. Further investing in and supporting the historic workers village with all of its rich history. The project is awaiting funding to progress further.

Value: £1m
Completed: Summer 2002
Commission: Feasibility Design